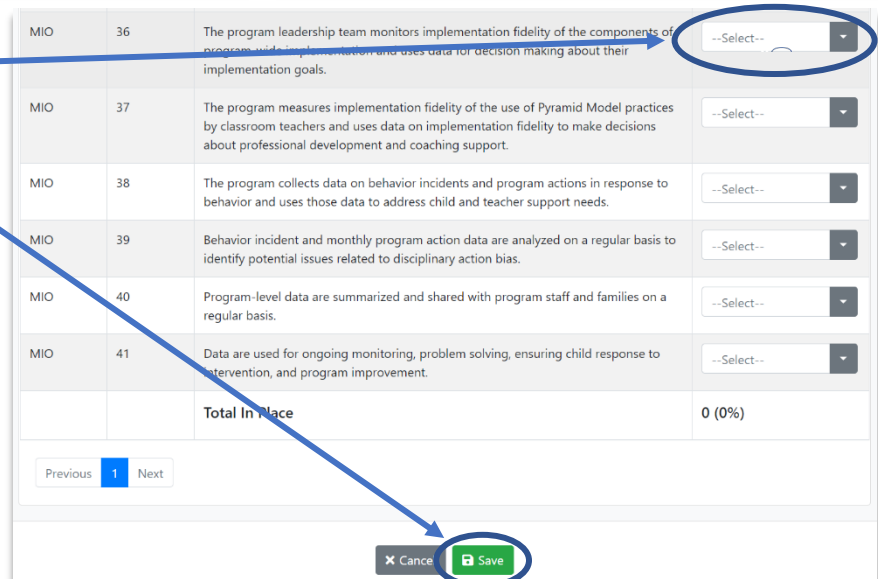
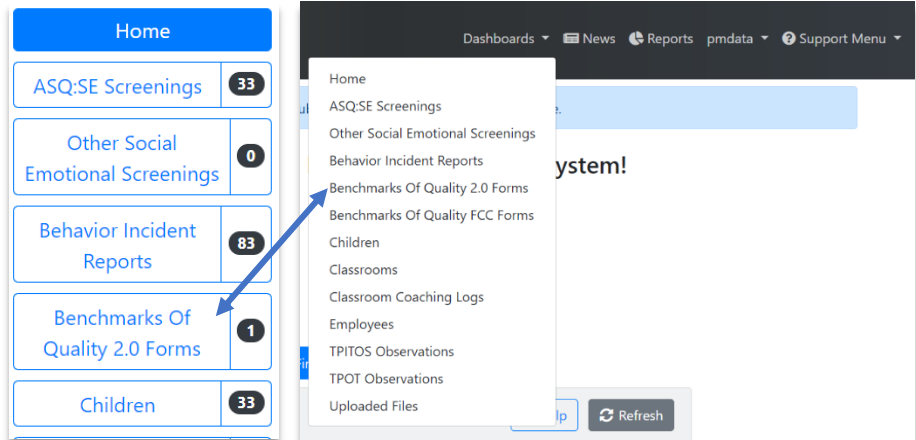




Entering and Using BOQ 2.0 Data in PIDS for Coaches

Entering a BOQ 2.0

1. Go to the Benchmarks of Quality 2.0 Forms dashboard.
2. Click "Add New BOQ."
3. Enter the form date and team members.
4. Scroll down to see the indicators.
5. For each indicator, click the arrow next to "Select" and choose the appropriate rating.
6. Once all ratings are entered, click "Save."

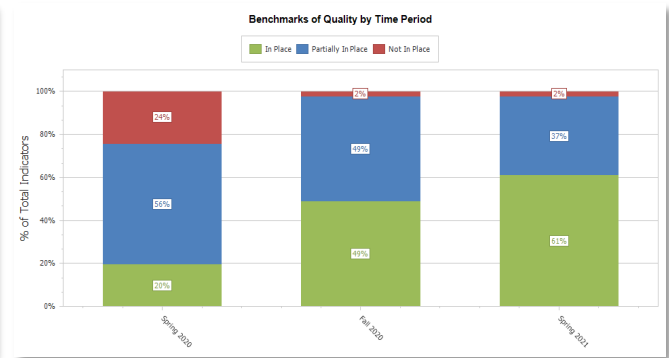
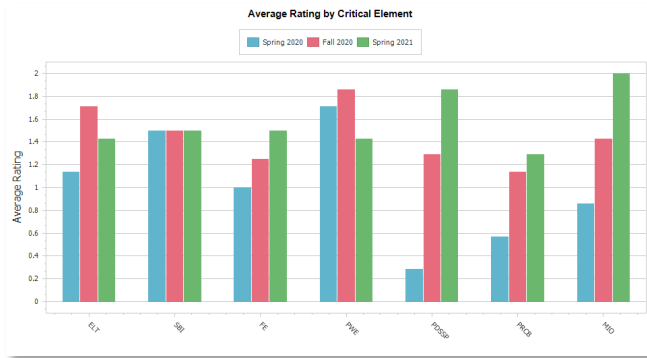


Entering and Using BOQ 2.0 Data in PIDS for Coaches

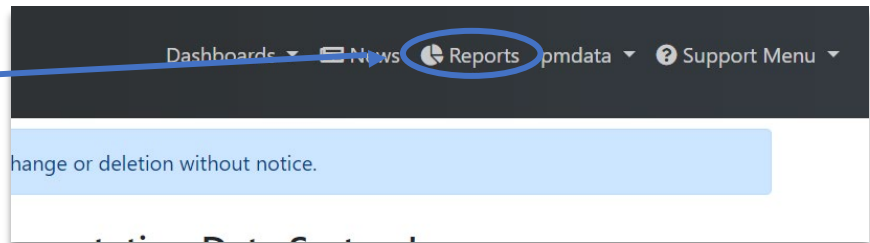


Viewing BOQ 2.0 Report

Analyzing Benchmarks of Quality 2.0 Report: Tracking Average Ratings by Critical Element Over Time



1. Click on "Reports" from the upper right-hand corner.
2. Replace the text in the search box with "BOQ" to narrow down the options.
3. Locate the "Benchmarks of Quality Trend Report" from the search results.
4. Click "Select" in the right column for the chosen report.
5. Enter the desired start and end dates for the time range you want to display.
6. Click "Run Report" in the upper left corner to generate the report.



Report Details

Benchmarks of Quality Trend Report

[Run Report](#)

Start Date: 07/01/2021

End Date: 05/31/2023

Program(s): Select All, The Meadow

All Reports

Search: boq

Report Name	Category	Description	Last Used On	Select	Documentation
Benchmarks of Quality Change Report	BOQ	This report displays the changes in indicator status for the most recent 5 Benchmarks of Quality 2.0 forms across time.	04/05/2022 10:48 AM ET	Select	Documentation
Benchmarks of Quality FCC Version 1 Change Report	BOQ	This report displays the changes in indicator status for the most recent 5 Benchmarks of Quality FCC Version 1 forms across time.	11/28/2020 09:38 PM ET	Select	Documentation
Benchmarks of Quality FCC Version 1 Data Export Report	Data Export	This report exports details about Benchmarks of Quality FCC Version 1 records to an Excel file.		Select	Documentation
Benchmarks of Quality FCC Version 1 Trend Report	BOQ	This report displays details about critical elements for each Benchmarks of Quality FCC Version 1 form in the reporting window. A graph of average ratings for each critical element over time is also displayed.	11/28/2020 09:40 PM ET	Select	Documentation
Benchmarks of Quality FCC Version 2 Change Report	BOQ	This report displays the changes in indicator status for the most recent 5 Benchmarks of Quality FCC Version 2 forms across time.		Select	Documentation
Benchmarks of Quality FCC Version 2 Data Export Report	Data Export	This report exports details about Benchmarks of Quality FCC Version 2 records to an Excel file.		Select	Documentation
Benchmarks of Quality FCC Version 2 Trend Report	BOQ	This report displays details about critical elements for each Benchmarks of Quality FCC Version 2 form in the reporting window. A graph of average ratings for each critical element over time is also displayed.		Select	Documentation
Benchmarks of Quality Trend Report	BOQ	This report counts of ratings of critical elements for each Benchmark of Quality in the reporting window for the selected programs. A graph of average ratings for each critical element over time is also displayed.	06/16/2023 10:27 PM ET	Select	Documentation
BOQ Data Export Report	Data Export	This report exports details about BOQ records to an Excel file.	11/01/2023 10:27 AM ET	Select	Documentation