



UTAH PYRAMID MODEL

Summer 2025





Table of Contents

Program Spotlight: Here We Grow.....	Page 1
Resource Spotlight: Greeting Board.....	Page 2
Updates: Spanish Courses.....	Page 3
Reports: PIDS.....	Page 4
About the Pyramid Model.....	Page 5

Welcome to the Utah Pyramid Model quarterly newsletter! This publication is designed to keep you informed and engaged with the latest updates, resources, and reports related to the Pyramid Model framework in Utah. Whether you're a practitioner, parent, or community member, our goal is to provide you with valuable information to support the development of social and emotional skills in young children. Through this newsletter, we'll share program highlights, training opportunities, and stories of success, ensuring you stay connected with the ongoing work to promote positive outcomes for children across the state.



Program Spotlight: Here We Grow

Here We Grow, after restructuring their Infant/Toddler Classrooms to reduce challenging behaviors through the Pyramid Model, has begun training their preschool teachers as well.

Changes included: posting a schedule, rules, and expectations; rearranging classrooms to include a center play area; shortening large group time to 10 to 15 minutes; labeling shelves and bins. These changes show how Here We Grow is prioritizing a welcoming and engaging environment for their children!



Visual posters of classroom rules.



Shelves with labels and images to make it easier for children to clean up.



Resource Spotlight: Greeting Board

Keep a greeting board in your classroom or when you visit children. This lets children choose their preferred method of greeting with less pressure.

Greetings | Saludos



smile
sonríe



high five
chócala cinco



hug
un abrazo



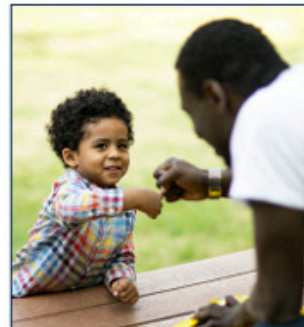
superhero salute
saludo de superhéroe



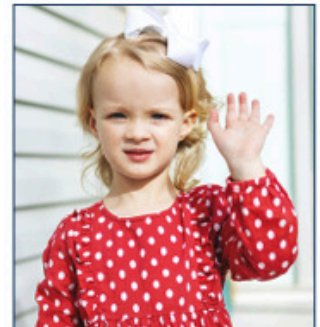
thumbs up
pulgar hacia arriba



happy dance
baile feliz



fist bump
choca los puños



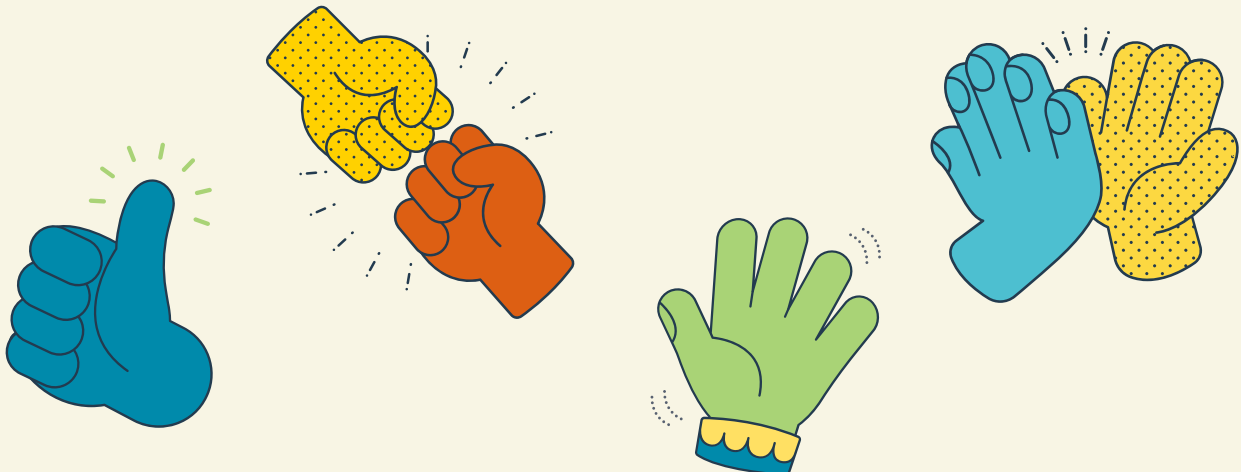
wave hello
saluda con la mano



National Center for Pyramid Model Innovations | ChallengingBehavior.org

The reproduction of this document is encouraged. Permission to copy is not required. If modified or used in another format, please cite original source. This is a product of the National Center for Pyramid Model Innovations and was made possible by Cooperative Agreement #H328220002 which is funded by the U.S. Department of Education, Office of Special Education Programs. However, these contents do not necessarily represent the policy of the Department of Education, and you should not assume endorsement by the Federal Government.

Pub: 10/02/23





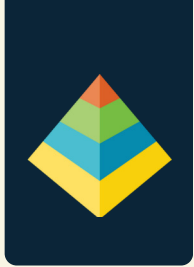
Updates

Spanish Language Courses

Utah Pyramid Model will be offering Preschool Tier 1 and Infant-Toddler Tier 1 course in Spanish on Canvas. The UPM team has begun this work by translating all existing PowerPoint presentations and embedding Spanish-language narratives. Instructions for internal coaches and Canvas navigation guidance will also be translated and included in both courses.



This initiative will ensure that Spanish-speaking individuals from Pyramid Model implementation sites can access all materials in their home language. Additionally, example and training videos of Spanish-speaking providers in Utah have been recorded and will be embedded in the courses to support the implementation of the Pyramid Model in early child care settings.



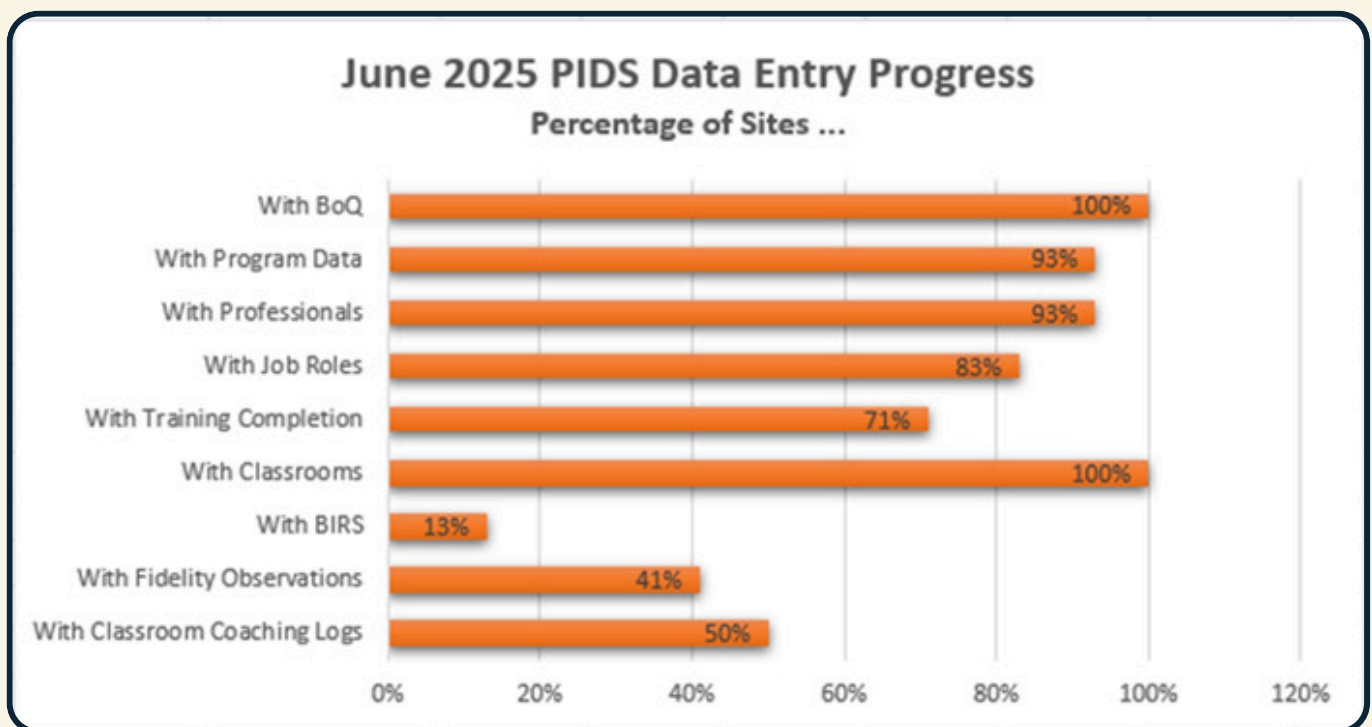
Reporting

Pyramid Model Implementation Data System

Utah Pyramid Model has been expanding use of the Pyramid Model Implementation Data System (PIDS), recently achieving 100% of programs entering classrooms and Benchmarks of Quality in June.

Data-driven decision making is an integral part of the Pyramid Model, and recording data in PIDS allows for patterns to be shown.

After reviewing PIDS data, one team noticed that one child’s challenging behavior occurred most often on one specific day of the week. Through conversation with the family, they learned that the evening before was when the child transitioned between households. This insight helped the team better understand the child’s experience and provide more targeted support.



Voices from the Field

“PIDS has been an amazing, amazing tool that I have been able to utilize for the past couple years. I started working with PIDS two years ago and it has been a learning curve, but I have definitely seen the end result of how that can be so beneficial.”

—Trevor, Internal Coach



About the Pyramid Model

The Pyramid Model is a framework to promote children's social and emotional development and decrease challenging behaviors. The model is divided into 3 tiers:



For additional information, watch the video below or visit <https://idrpp.usu.edu/projects/pyramid/>





Emma Eccles Jones College of Education & Human Services
Institute for Disability Research, Policy & Practice
UtahStateUniversity.

Pyramid Model



at Utah State University

Funding Provided by



Utah Department of
Health & Human
Services



**Utah State
Board of
Education**