



UTAH PYRAMID MODEL

WINTER 2025 NEWSLETTER





Table of Contents

Program Spotlight.....	Page 1
Resource Spotlight.....	Page 2
Unpacking the Pyramid ECHO.....	Page 3
Updates.....	Page 4
Reports.....	Page 5
About the Pyramid Model.....	Page 6

Welcome to the Utah Pyramid Model quarterly newsletter! This publication is designed to keep you informed and engaged with the latest updates, resources, and reports related to the Pyramid Model framework in Utah. Whether you're a practitioner, parent, or community member, our goal is to provide you with valuable information to support the development of social and emotional skills in young children. Through this newsletter, we'll share program highlights, training opportunities, and stories of success, ensuring you stay connected with the ongoing work to promote positive outcomes for children and their families across the state.



Program Spotlight: ABC Great Beginnings

ABC Great Beginnings has been helping children and families learn expectations and how to follow them. A director at ABC Great Beginnings said,



One family enrolled at ABC Great Beginnings has their expectations hung up in their home.



“We are super excited to see success in our center from the Pyramid Model by implementing visual schedules, solid routines, and classroom expectations. We sent the expectations home with our families and received some amazing feedback. One of our parents immediately started implementing them at home with their child and came back excited to give us the news. It is helping her children have a clear and visual understanding of what they are and mean.”





Resource Spotlight: Expectations Poster

“A set of positive expectations can help guide all interactions in the classroom. **Expectations** are general characteristics or ways you would like children and adults to behave. **Rules** help define exactly what expectations mean. Behavior expectations and rules are important because children are less likely to engage in challenging behavior when they know what to do, how to do it, and what is expected” (ChallengingBehavior.org).

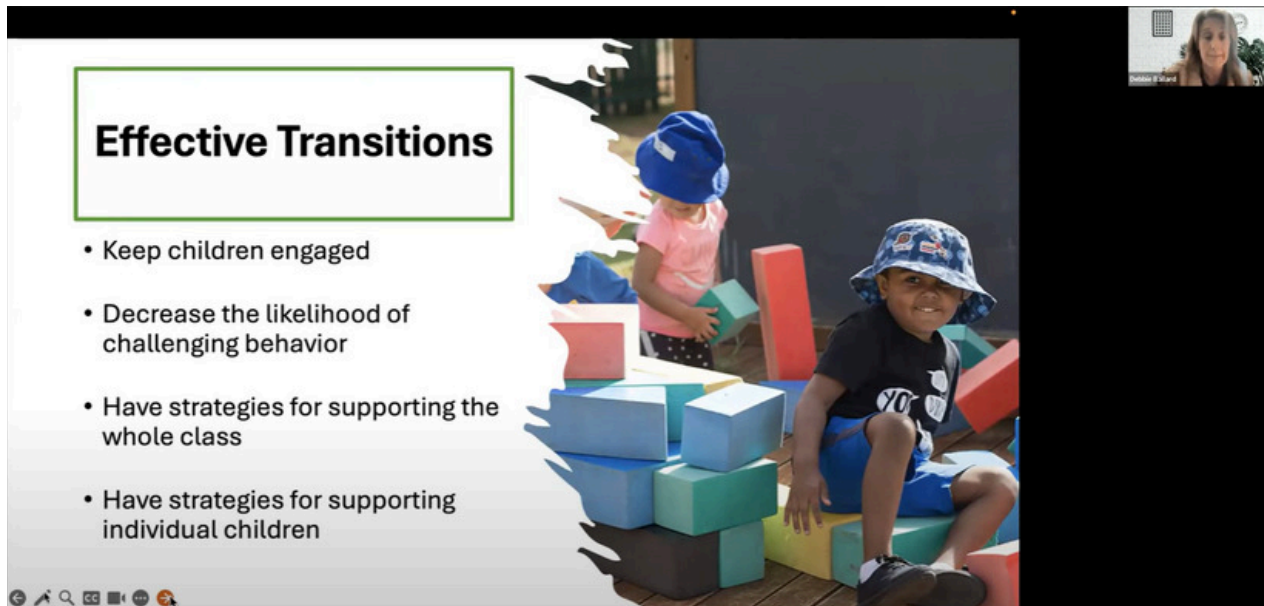
When introducing these expectations, make sure to teach and reinforce the principles systematically:

- Define the expectations
- Provide examples and non-examples
- Check for understanding
- Model, practice, rehearse
- Use gestures, pictures, or graphics to remind
- Acknowledge efforts frequently
- Share expectations and rules with families





Project ECHO: Unpacking the Pyramid Model



December 2024 ECHO Session with Debbie Ballard.

Past Sessions

This series has been all about transitions! Selene Kelsch and Kaitlyn Miller presented in Nov on how to navigate transitions between age groups in childcare, and Debbie Ballard shared advice and resources for activity transitions in infant-toddler classrooms.

[Watch Past Sessions](#)

Future Sessions

Our next session is Jan 27, 1-2:30pm.

Chelsea Oaks with the Utah State Board of Education will be presenting **“Stepping Stones to Special Education: A Preschool’s Referral Blueprint.”**

[Register](#)



Updates

Utah Childcare Solutions and Workplace Productivity Plan

Executive Summary
December 2024



[Read the full report here.](#)

The Childcare Solutions and Workplace Productivity Plan, funded by Utah state legislature in 2023 and released December 2024, created a report to “better understand child care gaps and challenges in Utah and review innovative approaches used in the state as well as in other states.” The report detailed a 5-point solutions plan to handle challenges in child care which include:

- **Child Care Supply**
- **Child Care Workforce**
- **Child Behavior**
- **Child Care Affordability & Accessibility**
- **Employer Public-Private Partnerships**

Utah Pyramid Model was listed as a potential recommendation to help with child behavior.

“The Pyramid Model is an evidence-based approach to address challenging child behavior used in early childhood programs across 43 states. In Utah, the Institute for Disability Research, Policy & Practice at Utah State University currently implements the Pyramid Model in 44 programs across 26 counties.

“**Recommendation.** The state could consider investing in an expansion of the Utah State University pyramid model to provide additional child care programs with support to address classroom quality and challenging child behaviors.”

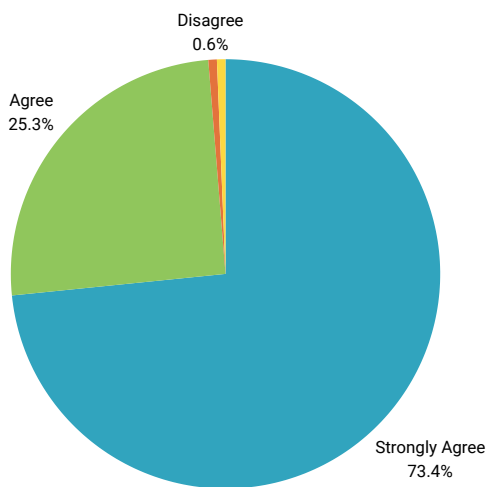


Reporting

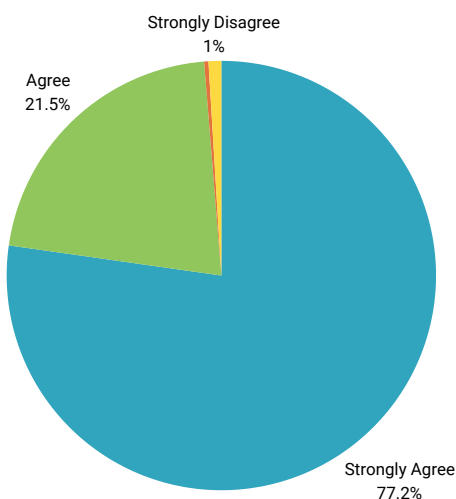
Q4 Satisfaction Data

Between Oct. and Dec. 2024, 312 participants attended a Pyramid Model training and completed a post-training satisfaction survey.

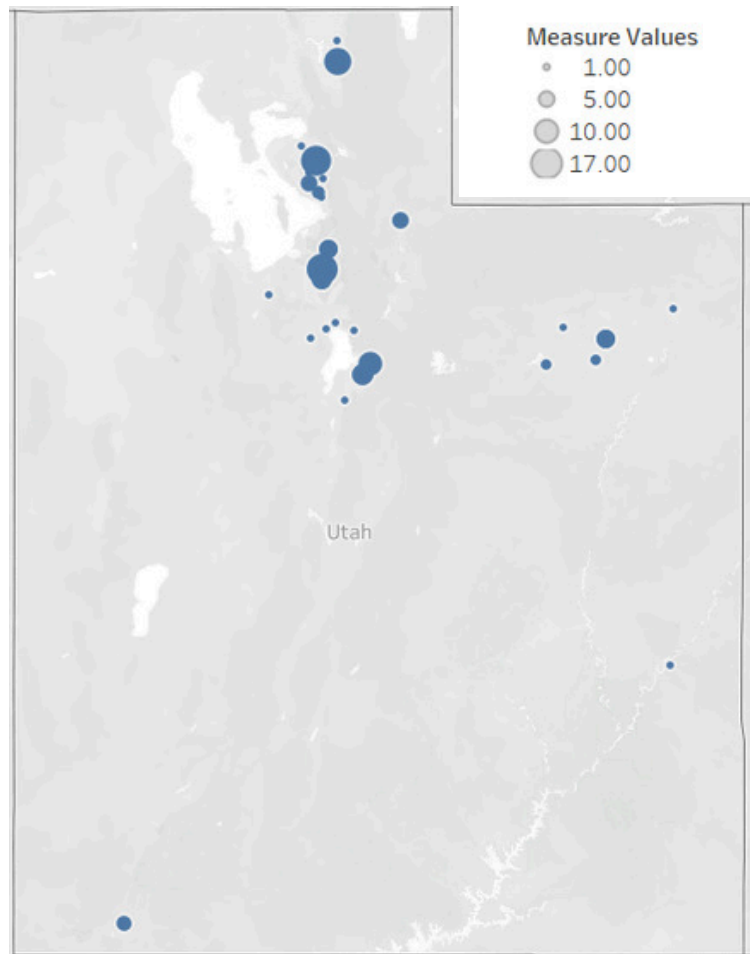
Increase of Knowledge Gain



Satisfaction with Training



Location of Attendees



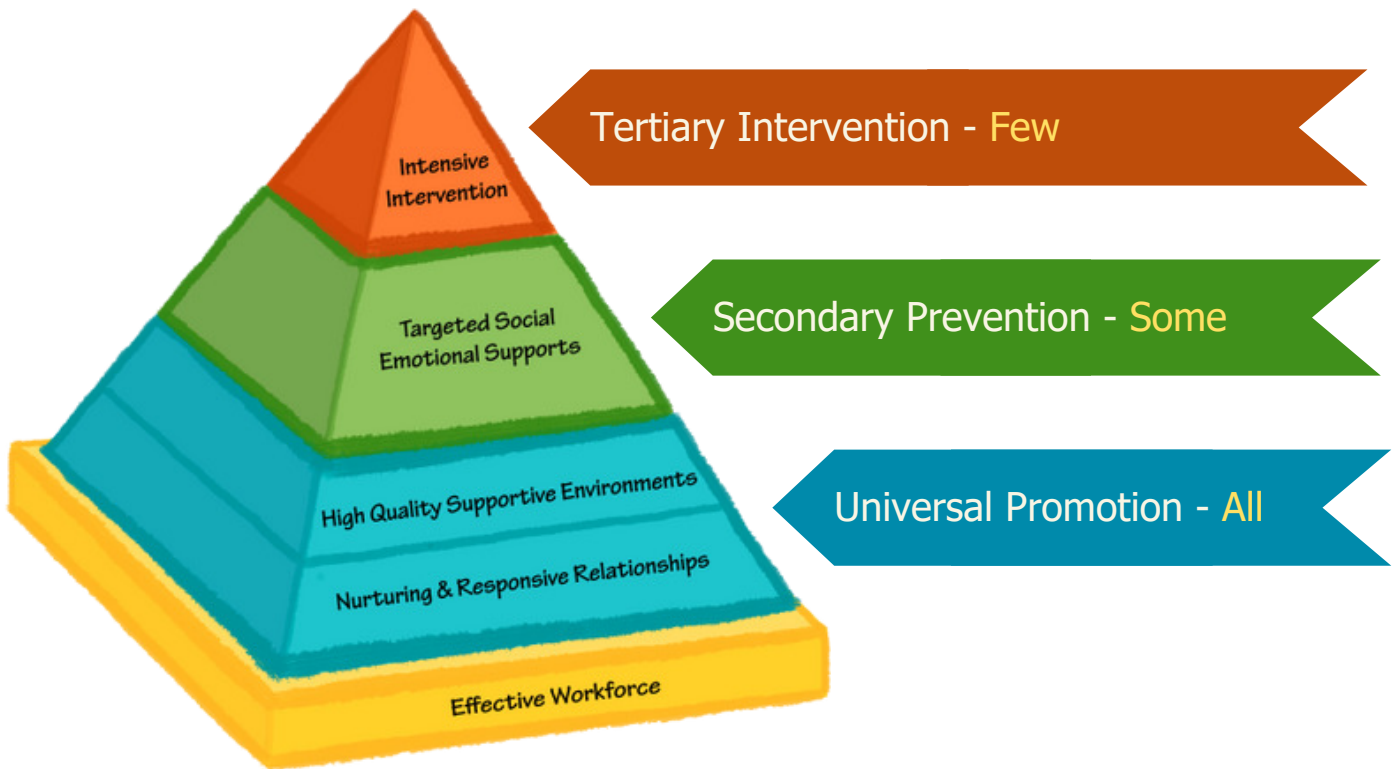
Out of the 312 survey respondents, 229 strongly agreed they had an increase in knowledge, 79 agreed, 2 disagreed, and 2 strongly disagreed.

Out of the 312 survey respondents, 241 strongly agreed they were satisfied with the training, 67 agreed, 1 disagreed, and 3 strongly disagreed.



About the Pyramid Model

The Pyramid Model is a framework to promote children's social and emotional development and decrease challenging behaviors. The model is divided into 3 tiers:



For additional information, watch the video below or visit <https://idrpp.usu.edu/projects/pyramid/>





Emma Eccles Jones College of Education & Human Services
Institute for Disability Research, Policy & Practice
UtahStateUniversity.

Pyramid Model



at Utah State University

Funding Provided by



Utah Department of
Health & Human
Services



**Utah State
Board of
Education**