



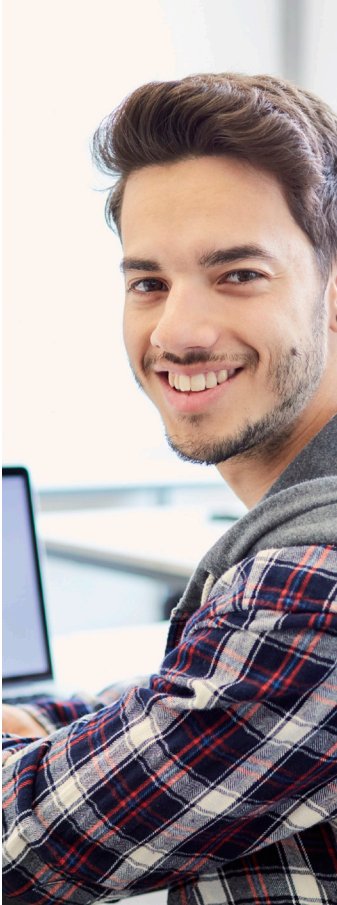
Understanding **VOCATIONAL REHABILITATION SERVICES**

A guide for partners



The vocational rehabilitation (VR) program assists people with physical or mental disabilities in finding jobs and living independently. Individuals who have difficulty getting or keeping a job may qualify for these services:

- Counseling and guidance
- Diagnostic and evaluation
- Medical services and treatment
- Assistive technology
- Training and education
- Work readiness and life skills training
- Youth pre-employment services
- Support services
- Job placement and job coaching
- Follow-up services



How to apply

1. Contact a local VR office.

Find the nearest VR office at jobs.utah.gov/usor/vr.

2. Schedule an orientation and/or obtain an application.

This overview of the services available can be completed in person or online. Clients must then complete an application and meet with a VR counselor.

3. Meet with a VR counselor.

People applying for VR services should bring any disability-related records to their first appointment. If they don't have these records, VR can help request medical records or schedule an evaluation. Referring partners may also share information about the person's disability to help determine if they qualify for services.

4. Next steps if eligible.

Eligible clients will create an Individualized Plan for Employment (IPE) with their VR counselor. This process of plan development includes:

- Completing assessments for career exploration
- Choosing the type of employment that is the best fit for their interest and abilities
- Determining the services needed to achieve their goal
- Identifying the services and supports to stabilize their disability
- Connecting with the person or agency that offers services needed

SERVICES TIMELINE

1. Application and Assessments



Application and eligibility assessment
Initial interview and eligibility determination
< 60 days

VR counselors meet with clients to review applications, conduct clinical interviews and gather necessary information for eligibility determination. This includes assessing education, work and disability history, requesting medical records, or paying for diagnostic evaluations. Eligibility requires a physical or mental impairment that creates a barrier to employment.



Assessment for rehabilitation needs
Employment goal selection and plan development
< 90 days

Counselors work with clients to assess their rehabilitation needs. They provide career counseling and guidance to help clients choose an employment goal and identify the services needed. Services are personalized based on what is reasonable, necessary and appropriate for each client.

2. Individualized Employment Plan *(Services vary based on the needs)*



VR counseling and guidance
Life of case

Counseling and guidance to help clients understand their disability, overcome employment barriers and navigate challenges. This includes career exploration, labor market research, job readiness support, problem-solving and encouragement.



Disability restoration services
Duration varies

These services help correct, manage, or stabilize the impairment for which an individual is eligible and may include mental health counseling, physical therapy, medication management, prosthetic devices or assistive technology. Some, like hearing aids, visual services, or assistive devices, are short-term, while others, such as therapy or medication management, may be long-term and is based on physician or clinician recommendations.



Training services

Duration varies

Helps clients gain the skills and credentials needed for employment. Based on individual needs, VR supports secondary education, post-secondary education (certifications, degrees), on-the-job training, job readiness, academic remediation and life skills development. Clients are expected to attend full-time unless a disability-related reason prevents full participation.



Other services

Duration varies

Helps clients overcome disability-related barriers and fully engage in plan activities. These may include transportation assistance, maintenance (food, clothing, shelter), assistive technology, tools and equipment, personal attendant services and student pre-employment services

3. Job Ready and Employed



Job placement support and stabilization

Duration varies

Counselors coordinate a job development, search and placement plan. The level of support is determined through a Job Readiness assessment conducted by the counselor. Plan services and activities may include an independent job search, counselor-guided assistance, or utilizing a vendor/service provider for job placement and coaching. Individuals with the most significant disabilities may require long-term job coaching services



Follow-up and monitoring

Minimum of 90 days

Once a client is employed and determined to be stable in their position without the need for further support or intervention, counselors provide follow-up, monitoring and prepare for case closure.

What types of disabilities qualify for vocational rehabilitation?

To qualify, a person must have a physical or mental condition that makes it hard to get or keep a job, and they must need help from VR to work. A disability is any condition that limits work and other important life activities. There's no list of specific disabilities that qualify, and no one type of disability is favored over another. Here are some examples of physical and mental conditions that might make it difficult to find employment. When meeting with a VR counselor, individuals should be ready to describe how their condition(s) affect their ability to work.

- Alcohol abuse or dependence
- Amputations
- Anxiety disorders
- Arthritis and rheumatism
- Asthma and other allergies
- Attention-deficit hyperactivity disorder (ADHD)
- Autism
- Blood disorders
- Cancer
- Cardiac and other conditions of the circulatory system
- Cerebral palsy
- Congenital condition or birth injury
- Cystic fibrosis
- Depressive and other mood disorders
- Diabetes
- Digestive conditions
- Drug abuse or dependence
- Eating disorders (e.g., anorexia, bulimia, or compulsive overeating)
- End-stage renal disease and other genitourinary system disorders
- Epilepsy
- Immune deficiencies including HIV/AIDS
- Intellectual/developmental conditions
- Multiple sclerosis
- Muscular dystrophy
- Parkinson's disease and other neurological disorders
- Personality disorders
- Physical disorders/conditions
- Respiratory disorders
- Schizophrenia and other psychotic disorders
- Specific learning disabilities
- Spinal cord injury (SCI)
- Stroke
- Traumatic brain injury (TBI)



For more information on VR please visit: www.jobs.utah.gov/usor/vr